

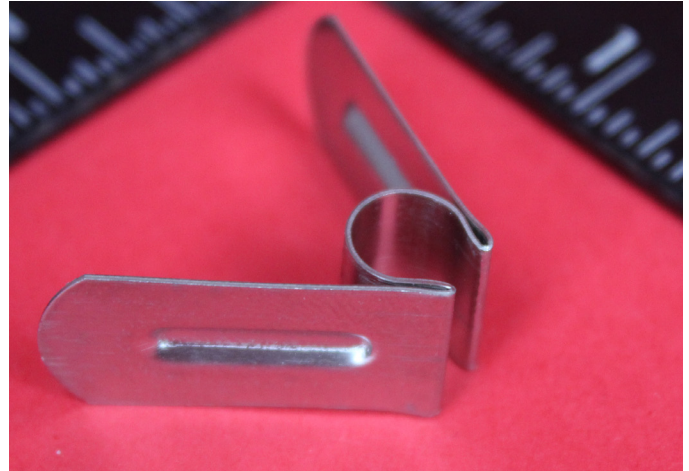


Terminal Clamp Type MTC

General Information

ZIRCAR Ceramics' Terminal Clamp Type MTC is used to securely clamp heating element straps onto the terminals of MoSi₂ Heating Elements. Constructed of corrosion-resistant spring steel, these clamps can be readily installed or removed by hand and will deliver many years of reliable performance

Two sizes are available: MTC-6 for 6mm-diameter terminals and MTC-9 for 9mm-diameter terminals.



Suggested Applications

Securing heating element straps to the terminals of Molybdenum Disilicide Heating Elements.

Availability of Standard Clamps

ITEM #	DESCRIPTION
D9105	MTC-6
D9106	MTC-9

To Order

Standard items: order online or specify quantity, item # and descriptions.

Standard items are available for immediate shipment from stock.

Shown in the picture to the right - Manual Terminal Clamps Type MTC securing Heating Element Strap Type 50A to the 6mm diameter terminals of a 3/6 MoSi₂ heating element.



The data presented herein is intended to help the user to determine the appropriateness of this material for their application. This data is a nominal representation of this product's properties and characteristics and therefore should not be used in preparing specifications.

ZIRCAR Ceramics, Inc.

PO Box 519
100 N. Main St., Florida, NY 10921-0519
Telephone: (845) 651-6600
E-mail: sales@zircarceramics.com

Technical Data Bulletin
Terminal Clamp Type MTC
www.zircarceramics.com
Page 1 of 1

Revision Date Dec. 21, 2016