



Heating Element Straps

General Information

ZIRCAR Ceramics' Heating Element Straps are used to connect MoSi₂ Heating Elements together or to a power feed terminal post. Constructed of corrosion-resistant, braided aluminum strand strapping, these Heating Element Straps can provide many years of uninterrupted performance. Several types and styles are produced.

Heating Element Strap Type 50A.

For use on 3/6 elements with 6mm diameter terminals.

50 Amp. current capacity.

Single ply braid approximately 12.5mm (0.5") wide x 2.0mm (0.80") thick.

Two standard styles offered.

Style 1: Aluminum crimps both ends. Overall length 102mm (4.0").

Style 2: Aluminum crimps both ends, one end with 9.5mm (0.38") drilled hole.

Heating Element Strap Type 125A.

For use on 6/12 elements with 12mm diameter terminals.

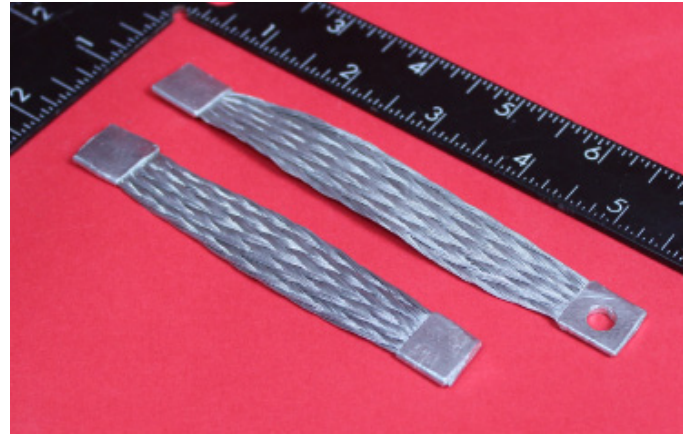
125 Amp. current capacity.

Double ply braid approximately 25mm (1.0") wide x 3.0mm (0.13") thick.

One standard style offered.

Aluminum crimp with 9.5mm (0.38") drilled hole one end, Stainless Steel Clamp on other end.

Overall length 229mm (9.0").



Availability of Standard Straps

ITEM #	DESCRIPTIONS
A29001	50A, STYLE 1, 4" OAL
A29020	50A, STYLE 2, SINGLE, 5" OAL
D10071	125A, 5.9" OAL

To Order

Standard straps: order online or specify quantity, item # and description.

Standard items are available for immediate shipment from stock.

Custom straps - e.g. longer, double and insulated straps - are available. Please contact ZIRCAR Ceramics.

The data presented herein is intended to help the user to determine the appropriateness of these products for their application. This data is a nominal representation of their properties and characteristics and therefore should not be used in preparing specifications.

ZIRCAR Ceramics, Inc.

PO Box 519

100 N. Main St., Florida, NY 10921-0519

Telephone: (845) 651-6600

E-mail: sales@zircarceramics.com

Technical Data Bulletin

Heating Element Strap

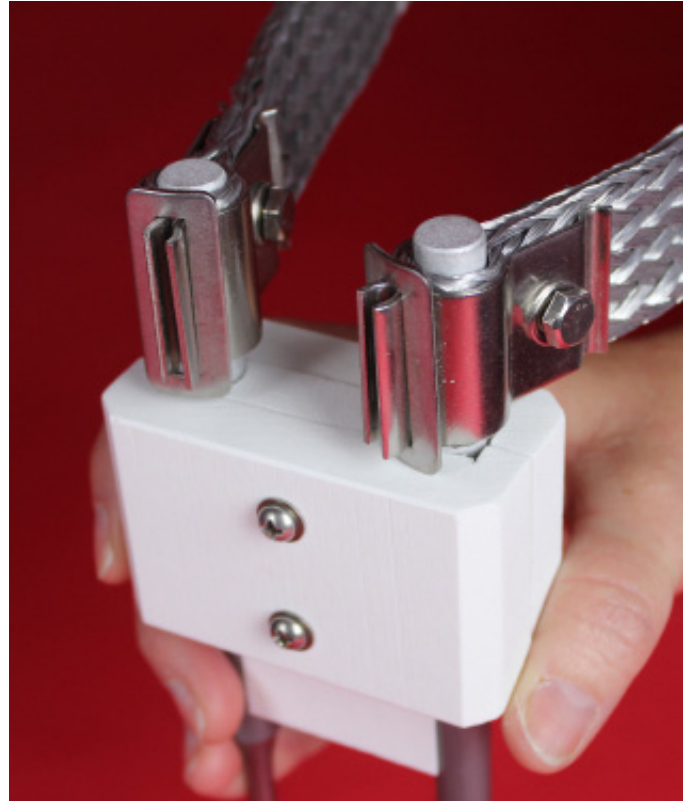
www.zircarceramics.com

Page 1 of 2

Heating Element Straps



50-Amp straps are connected to MoSi₂ Element terminals with the use of a Manual Terminal Clamp Type MTC.



125-Amp straps are connected to MoSi₂ Element terminals with their integral stainless steel clamp.